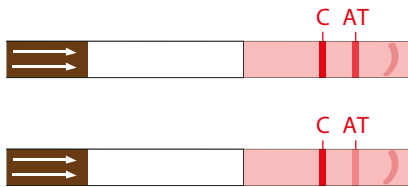


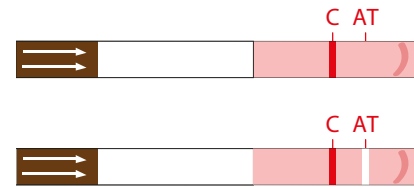


# Lab.Test DAT

## INTERPRETATION OF RESULTS



Weak line= positive result



White line= negative result

AT = Antiglobulin Test for detection of Canine Direct Antiglobulin Test

C = Control Line

In case of any other result, please take a picture and send us an email at : [contact@alvedia.com](mailto:contact@alvedia.com) [www.alvedia.com](http://www.alvedia.com)

## SCIENTIFIC ADVISES

Be careful, low titer and/or low affinity autoantibodies can be eluted during washing step procedures. This can affect the sensitivity of the DAT test.  
An hemolyzed sample or a blood sample drawn more than 12 hours could give you a negative result.

Troubleshooting :  
Please contact the  
Scientific Service Laboratory  
[contact@alvedia.com](mailto:contact@alvedia.com)  
+33(0)478 380 239

**Alvedia**  
Alice Veterinary Diagnostic

Procedure Alvedia - maj 20/11/2023 Small Stories ©

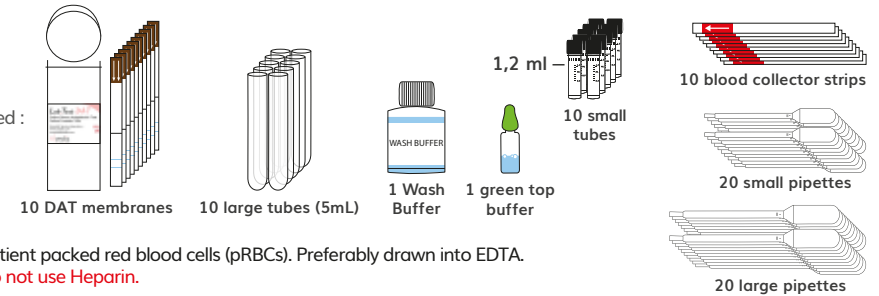


# Lab.Test DAT



## FELINE PROCEDURE FOR DIRECT ANTIGLOBULIN TEST

Material provided :



Sample material : Patient packed red blood cells (pRBCs). Preferably drawn into EDTA.

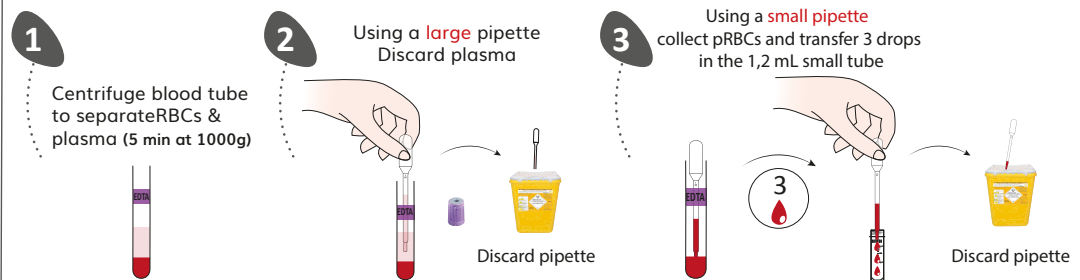
**Do not use Heparin.**

Further material required : Centrifuge (Benchtop mini-centrifuge or others)

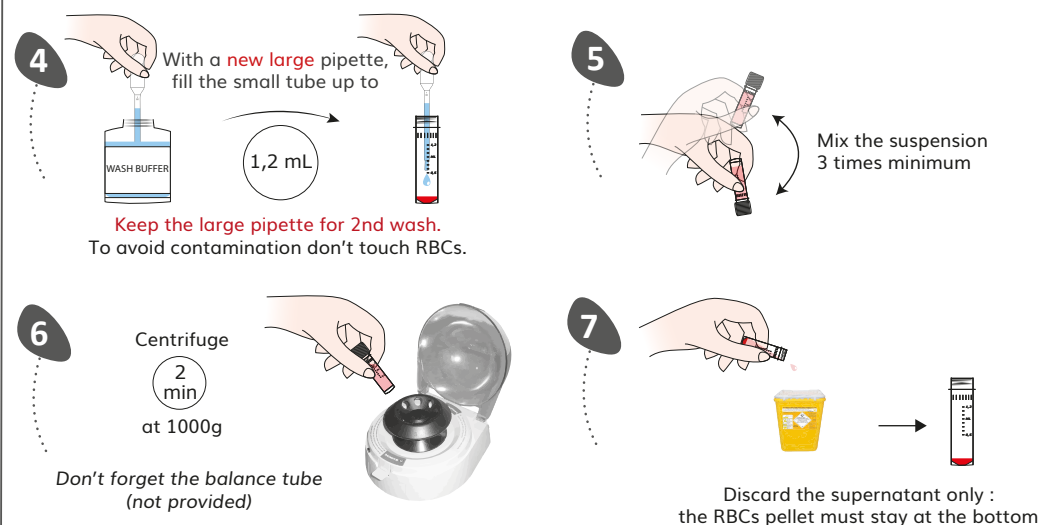
**FOR RELIABLE RESULTS : USE FRESH COLLECTED BLOOD ONLY (< 12 HOURS)**

## N°1 : PACKED RED BLOOD CELLS (pRBCs) WASHING PROCEDURE

### PREPARATION



### FIRST WASH



## SECOND WASH

**8** With the **large** pipette, fill the small tube up to 1,2 mL

Keep the large pipette for 3rd wash. To avoid contamination don't touch RBCs.

**9** Resuspend completely the pellet by mixing the suspension several times

**10** Centrifuge 2 min at 1000g  
Don't forget the balance tube

**11** Discard the supernatant only : the RBCs pellet must stay at the bottom

## THIRD WASH (PROCEDURE TO AVOID DILUTION BEFORE TESTING)

**12** With the **large** pipette, fill the small tube up to 1,2 mL

Discard the large pipette

**13** Resuspend completely the pellet by mixing the suspension several times

**14** Centrifuge 2 min at 1000g  
Don't forget the balance tube

**15** Using a **new small pipette**, discard the entire supernatant  
KEEP RBCs PELLET

**A** Discard the residual supernatant until reaching few RBCs

**B** Discard the remaining supernatant with few RBCs

**C** Discard the small pipette

**D** Washed RBCs pellet ready for DAT test procedure  
**TO BE USED IMMEDIATELY**

## N°2 : DAT TEST PROCEDURE

**1** Write down the patients ID  
cat n°1

**2** Add 4 drops of the green top buffer in the 5 mL large tube

**3** Collect the RBCs pellet with the blood collector strip About 10 µL

**4** Dip the blood collector strip in the large tube and mix with buffer solution 10s  
Discard blood collector strip

**5** Insert the DAT membrane

**6** WAIT UNTIL COMPLETE MIGRATION  
Up to 10 min

**7** Read the result at the end of the migration by sticking the membrane on the result form

**FELINE RESULT FORM**  
for Direct Anti-globulin Test (Coombs Test)  
**Lab Test DAT**

Date: .....  
Patient name: .....  
Identification code: .....  
Test performed by: .....  
Lab Test number: .....

RESULT:  DAT +  DAT -

TO INTERPRET YOUR RESULT, STICK THE MEMBRANE BELOW

AT AT  
C AT

AT = Antigen Test for detection of Canine Direct Antigen Test  
C = Control Line

**INTERPRETATION OF RESULTS**

⊕ C AT C AT  
C AT C AT

Weak line= positive result White line= negative result

**Alveda**  
In case of any other result, please take a picture and send us an email at: [contact@alveda.com](mailto:contact@alveda.com)  
[www.alveda.com](http://www.alveda.com)