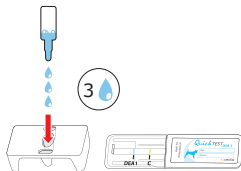


QuickTEST_{DEA 1}

1

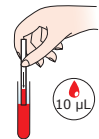


2



3

3



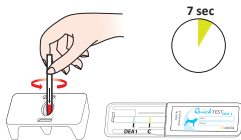
10 µL

Packed Red Blood cells
Or whole blood

- EDTA
- ACD
- CPD

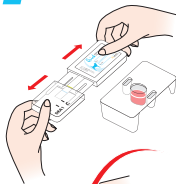
Do not use Heparin

4

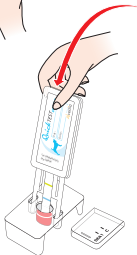


7 sec

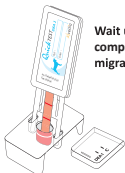
5



6



7



Wait until complete migration

2 to 4 min

8



Read immediately after testing



C = control



Weak DEA 1 line



Contact us to ask for the
«Troubleshooting procedure»